



## How to View the Episodes!

- Are you trying to work out what you need to do to watch the Star Trek New Voyages: Phase II episodes at home on your computer or DVD player?
- Have you downloaded our files and then received an error message?
- Are you confused by terms like DivX, mkv, mp4, srt, nfo, 24p, 720p, etc?

If you have answered “yes” to any of these questions, then read on, we will do our best to explain these things for you in simple terms which you just need to follow exactly.

## Contents

How to watch our episodes online	2
What you need to know before downloading!	2
Enhanced and high definition videos (EDTV/HDTV)	3
Way too technical – What does this all mean in simple terms?	3
What are DivX (.divx or .avi) and Matroska (.mkv) files?	4
How do I play DivX files or Matroska (mkv) files?	4
How do I watch episodes with subtitles (captions)?	5
How do I download and unpack the episodes?	6
Understanding the file names used	9
Linking to our episodes	9
How you can help us make more Phase II episodes	10

## How to Watch our Episodes Online:

If you simply just want to watch our episodes, you can do so on our [www.startrekphase2.de](http://www.startrekphase2.de) website using our new (2014) html5 video player, which should work on all computers and mobile devices.

We offer subtitles (captions) for a number of important languages which you can select with the “CC” button on the video player. Note that on some mobile devices, they often use their own built-in html5 player, instead of ours, which often do not give you the option to view subtitles/captions. Unfortunately, there is nothing we can do to prevent this happening. If you need to be able to watch our episodes with subtitles on a mobile device, download our episodes via WLAN and use the VLC Mobile player on your device, instead. This has the additional advantage of working offline and not needing to use up your data allowance when not using WLAN.

Alternatively, you can watch our episodes with optional subtitles on the startrekphase2DE YouTube channel: <http://www.youtube.com/user/startrekphase2DE>

## ***What you need to know before downloading!***

There are a few things you need to know about video standards around the world, so that you know which version of our episodes is right for you.

### **Standard Definition TV**

There were three standard definition TV systems (SDTV) used in the world for TV and video recording as follows:

**NTSC** was the standard used in America, Japan and a few other countries. The picture size is 720x480 and the video contains 29.976 frames (pictures) per second (fps). In some cases (movies), 23.976 fps has been used instead and is still used worldwide for Blu-Ray disks.

**PAL** was used throughout most of Europe and many other countries like Australia, etc. The picture size is 720x576 and the video contains 25 frames (pictures) per second (fps).

**SECAM** was the system used in France and a few other countries. It is very similar to PAL and as far as watching out episodes is concerned it makes no difference.

Although in the past, it was very important to use the correct PAL/NTSC files for your country, all modern HD-Ready TVs and DVD players sold in Europe can now play files from any standard. Some TVs in the USA can however only play 23.976 fps and 29.976 fps, yet not 25fps.

As these analogue TV standards have been replaced by digital systems in most countries of the world, we now no longer provide separate videos for PAL and NTSC. Instead we simply provide SDTV (Standard definition TV = 720x404), EDTV (Enhanced definition = 854 x 480) and HDTV (High definition = 1280x720 and/or 1920x1080) files mainly at 23.976 fps (24p) as that frame rate works everywhere. Some documentary videos made in Europe, were filmed and shown here at 25fps (25p) and therefore may not play on some US systems. However, they will all play on computers everywhere.

**24p** refers to videos with 24 frames per second (or 23.976fps), which is the same speed used for movie films. In our tests, we have found that videos with 24 fps can be played even in older PAL and NTSC equipment without problems. We have therefore phased out our PAL and NTSC versions and simply provide a 24p version instead for standard definition (SDTV) versions. All HDTV videos we provide use 24p (with some documentary videos, we may use 25p instead).

## **Enhanced and High Definition Videos (EDTV/HDTV)**

In the past few years, high definition TVs, Blu Ray (DVD) players and media boxes (set top box) have become much more common. Enhanced definition means videos with a picture size of 854x480 (480p) and high definitions has a picture size of 1280x720 (720p) or 1920x1080 (1080p).

Our first episode filmed in HDTV is “*World Enough and Time*” and all subsequent episodes are filmed in HD as well. As HDTV uses the same picture sizes worldwide, our HD videos can be viewed anywhere provided you have suitable HD equipment to play it on.

You can also watch our episodes in HD with subtitles on our YouTube channel: startrekphase2DE <http://www.youtube.com/user/startrekphase2DE>

### **Way too technical – What does this all mean in simple terms?**

In simple terms, we now offer our videos at Standard (SDTV), Enhanced (EDTV) and High Definitions (HDTV) where the higher the definition, the better the episodes will look, yet will take longer to download and take up more space on your computer.

#### **Watching on a Computer or Tablet:**

All our episodes will play on reasonably modern computer and/or tablets, although in some cases, you might need to install a DivX compatible player. We recommend the free VLC media player for this:

<http://www.videolan.org/vlc/index.html#download>

#### **Watching on an American TV (NTSC countries):**

- All our episodes can be played on your HD-TV, but some of our “25p” documentary videos might not play. Watch those on your computer, instead.
- If you do not have an HD-TV, download our SDTV videos to watch on your TV.

#### **Watching on a European TV (PAL/SECAM countries):**

- The “HD-Ready” standard ensures that all HD-TVs are capable of showing our episodes and documentaries.
- If you do not have an HD-TV, download our SDTV videos to watch on your TV, instead. On very old PAL TVs, you may not be able to play the episodes made before “*World Enough and Time*” marked at 29.976fps. Watch those on your computer, instead. All our 23.976fps episodes should play fine even on old PAL TVs.

***In other words, if you have a reasonably fast internet connection and an HD-TV, download the HDTV version and watch it on your computer or TV, it will almost always work fine. If you have a slow internet connection and/or standard TV, then simply download the SDTV version, instead.***

## **What are DivX (.divx or .avi) and Matroska (.mkv) files?**

Most people are aware that the tracks of an Audio-CD can be converted into much smaller files in the so-called MPEG3 (MP3) format, which can then be played on MP3 players, etc. Whereas an Audio-CD will only play about 80 minutes, a CD of the same size will store many hours of sound, of similar quality, in MP3 format.

The MPEG4 (MP4) standard is basically the counterpart for video where you can convert a movie on a DVD to the MP4 (aka MPEG4) standard, for example, to allow the same movie to fit on a CD, while maintaining the same high picture quality. MP4 is the standard format used by Quicktime for example.

**DivX** (sometimes you will find it called XviD instead) is a popular video format based on the MP4 video standard. DivX has become a highly popular format as it allows high quality films to be stored in reasonably small file sizes – this makes it an ideal format for distributing films like our New Voyages: Phase II episodes via the Internet. Downloading a 400MB DivX file takes a lot less time than a 4.7GB DVD image would, for example. DivX files use the file extension .divx or .divx.avi as often used with our files. Adding .avi on the end allows more video players to recognize the file as a video.

**Matroska** is an open source video format typically used for high definition video with the .mkv file extension. We use the .mkv format for our 480p enhanced and 720p high definition videos. This extension is widely recognized by equipment capable of playing high definition videos. The .mkv format allows us to include subtitles for our episodes, without the need for separate .srt subtitle files. Your player or device should offer you an option to display subtitles – see the instructions for your device or player for details.

### **How do I play DivX or Matroska files?**

A number of the latest DVD and almost all Blu Ray players can already play DivX and Matroska files. All you need to do is burn the video files onto a CD or DVD (if the device has a card reader or USB port, you can copy the files onto an SD memory card or USB stick instead). Then insert your disk/SD card/USB stick into your DivX compatible player and enjoy the show. If you are unsure if your DVD player will play DivX or Matroska, have a look at the operating instructions. If it tells you it can play DivX or MPEG4 files, then our episodes should play properly. You can also just try our episodes in your player, in most cases it should work if your device is not too old.

In order to play DivX files on a computer, you will need to install a DivX driver first. Once installed, you can use any video player, like the Windows Media Player, Real Player, etc. to play the videos – just double-click on the \*.avi file name (e.g. “stnv0401v-center.seat.sdtv.divx.avi”).

Before trying to install the DivX driver, try starting one of our videos to see if it works. If you get an error message, then you will need to install the DivX player on your computer. The DivX player is free and can be downloaded here: <http://www.divx.com>

Please note that the DivX player will also play subtitles (use the UTF-8 format), whereas other video players may need the ANSI or other formats (like some east European languages) instead.

Alternatively, you can install the VLC Media Player, which will also play the subtitles without any additional software. The VLC Media Player is free, will play almost anything, and is easy to use. It can be downloaded from here: <http://www.videolan.org/vlc/>

Installing the VLC Media Player is the easiest method of viewing our videos with subtitles.

## ***How Do I watch Episodes with Subtitles (captions)?***

We are now offering subtitles in English, German, French, Spanish and several other languages, as they are made available to us, using the popular SRT format. These can be played on your computer and recent DVD or media players as well, that recognise the SRT format (please see the operating instructions of your player).

**MKV and Subtitles:** If you are downloading our episodes in the Matroska (.mkv) format, then watching our episodes with subtitles should be easy. Just select the subtitle language you want in the menu of your video player. No need for .srt files, just the one .mkv file. If we later release an additional language not included in your .mkv, you can either download the .srt file and use that as below, or download the .mkv file again as we always keep it updated with all available languages. If we list your language as having downloadable subtitles, then the mkv file will have those languages as well.

You can also watch our episodes with subtitles on the video player on our website (CC button) and/or on our YouTube channel.

### **Downloading srt subtitle files**

For our SDTV and HDTV 1080p download versions, the respective subtitle file for your language has to be downloaded separately from the [www.startrekphase2.de](http://www.startrekphase2.de) website. Then extract it from the zip file and copy the extracted \*.srt file in the same directory and with the same file name as the video file, apart from the \*.srt ending. \*.srt files with different file names may be deleted.

### **ANSI or UTF-8 (or others)?**

There are two text formats commonly used with subtitle files: ANSI and UTF-8. In most cases, the UTF-8 format is the one used by most players, but some need the ANSI or other formats (e.g. for Czech), instead.

You will find the versions in the respective subdirectories. We suggest you copy the file from the UTF-8 directory to the same directory as the downloaded video file first. If you find that some characters (especially punctuation or foreign characters) look strange, then you should use the ANSI or other supplied coded version, instead.

e.g. in our Center Seat example, the file names look like this:

- stnv0401v-center.seat.sdtv.divx.avi    Video file in standard definition
- stnv0401v-center.seat.sdtv.divx.srt    Respective subtitle file in ANSI or UTF-8

The \*.srt file is a simple text file and can be opened with Windows Notepad, for example. If you do not want subtitles, you can simply delete the file or rename it to something else.

If you are using the VLC Media Player or DivX Player to view the video, the subtitle file will be recognised automatically and played with the video. You can switch off the subtitles within the program as desired.

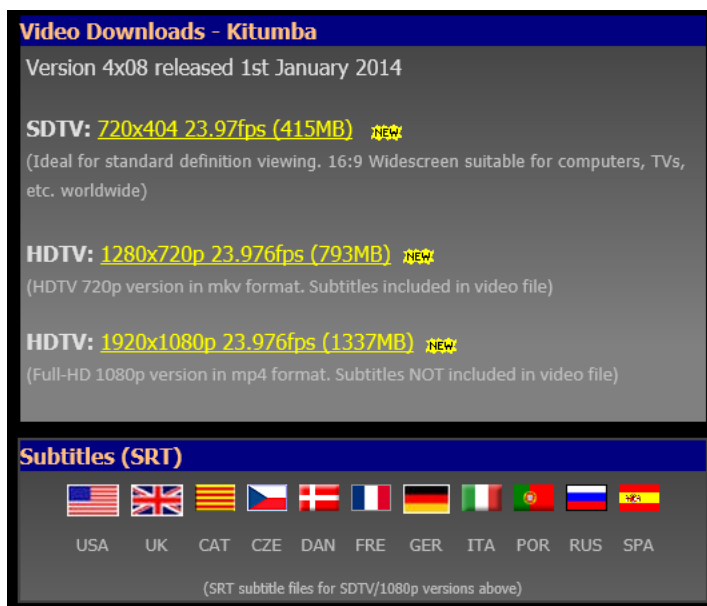
Other video players may need you to install a small driver so that subtitles will work on your system. In this case, we recommend you install the DirectVobSub driver, which can be downloaded from <http://www.divxmovies.com/subtitles/>

Once installed, you can view the video with Real player, Windows Media Player, etc. and the subtitles should appear automatically. The \*.srt file works with most players, provided DirectVobSub has been installed.

## How do I download and unpack the episodes?

Just use the following instructions:

1. Visit the website <http://www.startrekphase2.de>, decide which episode you wish to download and display that page in your internet browser, e.g. <http://www.startrekphase2.de/kitumba>
2. Scroll down to the bottom of the page until you see the Video Downloads section
3. You now need to determine which version you need: SDTV, HDTV 720p or 1080p. We are now releasing high definition (HD) versions in 720p (1280x720) or 1080p (1920x1080 image size) at 23.976 fps (24p). If you have an HD ready TV or computer, then the 1080p version will give you the best image quality, but will take longer to download.



**Video Downloads - Kitumba**  
Version 4x08 released 1st January 2014

**SDTV:** [720x404 23.97fps \(415MB\)](#) NEW  
(Ideal for standard definition viewing. 16:9 Widescreen suitable for computers, TVs, etc. worldwide)

**HDTV:** [1280x720p 23.976fps \(793MB\)](#) NEW  
(HDTV 720p version in mkv format. Subtitles included in video file)

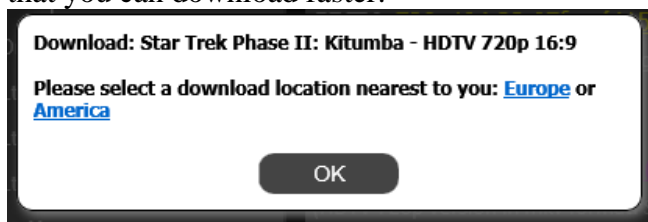
**HDTV:** [1920x1080p 23.976fps \(1337MB\)](#) NEW  
(Full-HD 1080p version in mp4 format. Subtitles NOT included in video file)

**Subtitles (SRT)**

USA UK CAT CZE DAN FRE GER ITA POR RUS SPA

(SRT subtitle files for SDTV/1080p versions above)

4. You may then be asked to select a download location. Select the location nearest to you so that you can download faster:

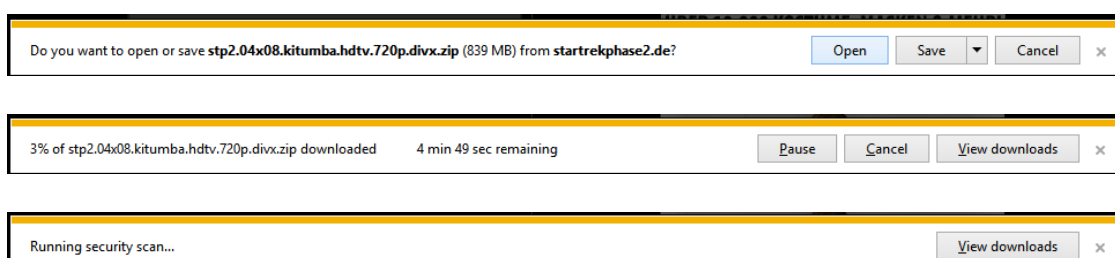


**Download: Star Trek Phase II: Kitumba - HDTV 720p 16:9**

Please select a download location nearest to you: [Europe](#) or [America](#)

OK

5. You are then asked if you wish to open or save the file. Click on Save and the file will download. Note: these examples are from Internet Explorer and Windows 8 and will look different with other browsers and operating systems.



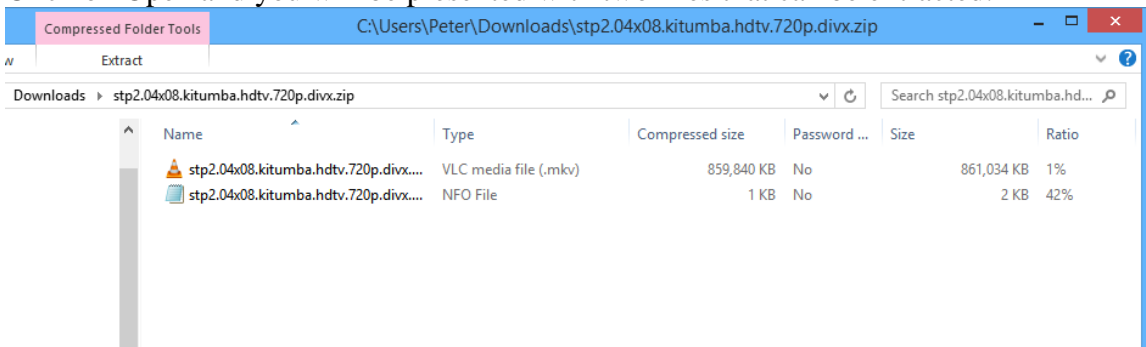
Do you want to open or save [stp2.04x08.kitumba.hdtv.720p.divx.zip](#) (839 MB) from [startrekphase2.de](#)? [Open] [Save] [Cancel]

3% of [stp2.04x08.kitumba.hdtv.720p.divx.zip](#) downloaded 4 min 49 sec remaining [Pause] [Cancel] [View downloads]

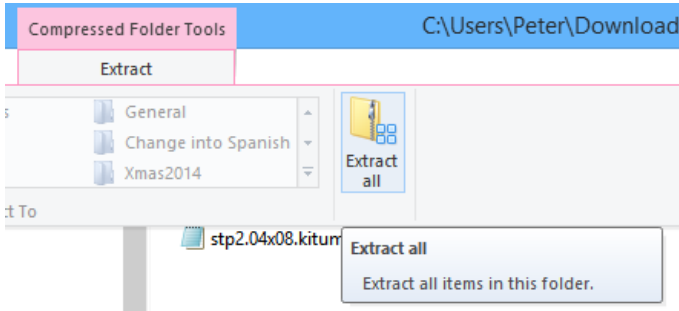
Running security scan... [View downloads]



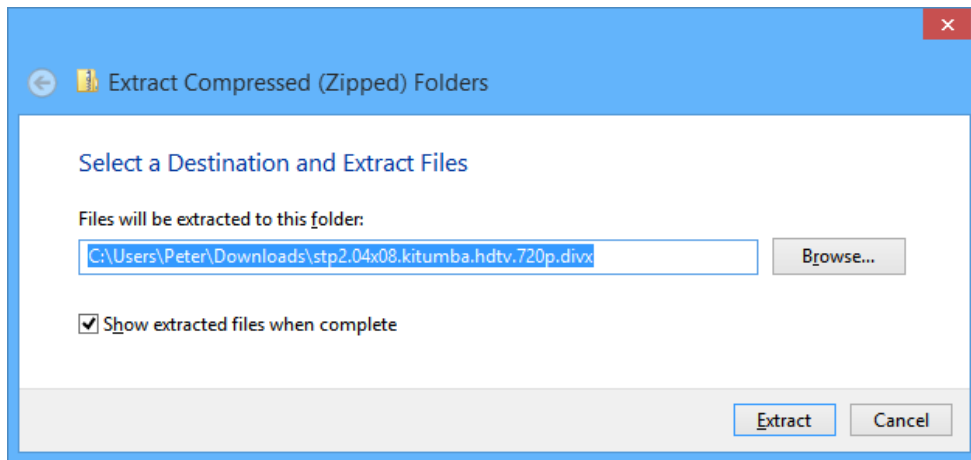
6. Click on Open and you will be presented with two files that can be extracted:



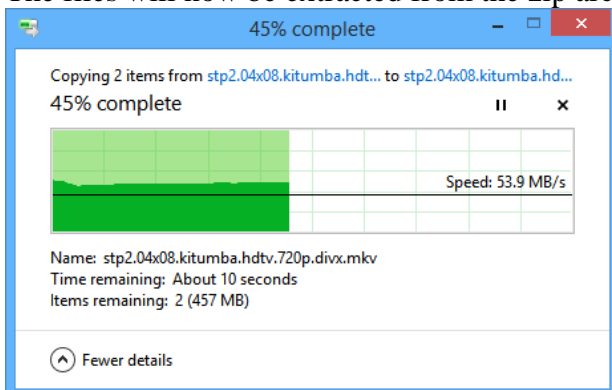
7. Click on Extract and then Extract All:



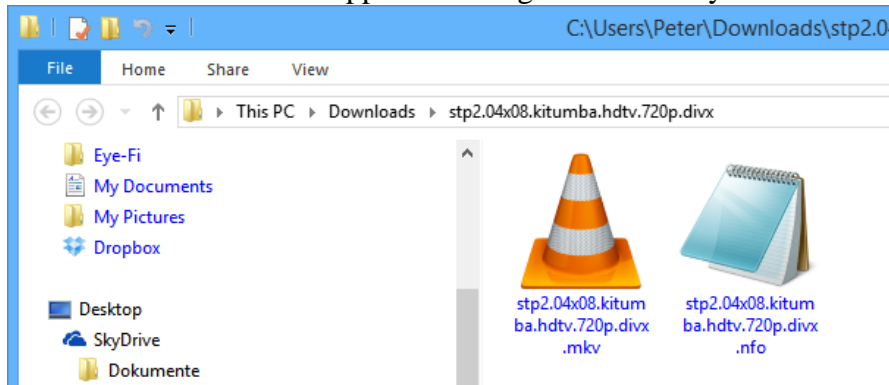
8. A new window appears and you can select the location to save the files and then click on Extract:



9. The files will now be extracted from the zip archive:



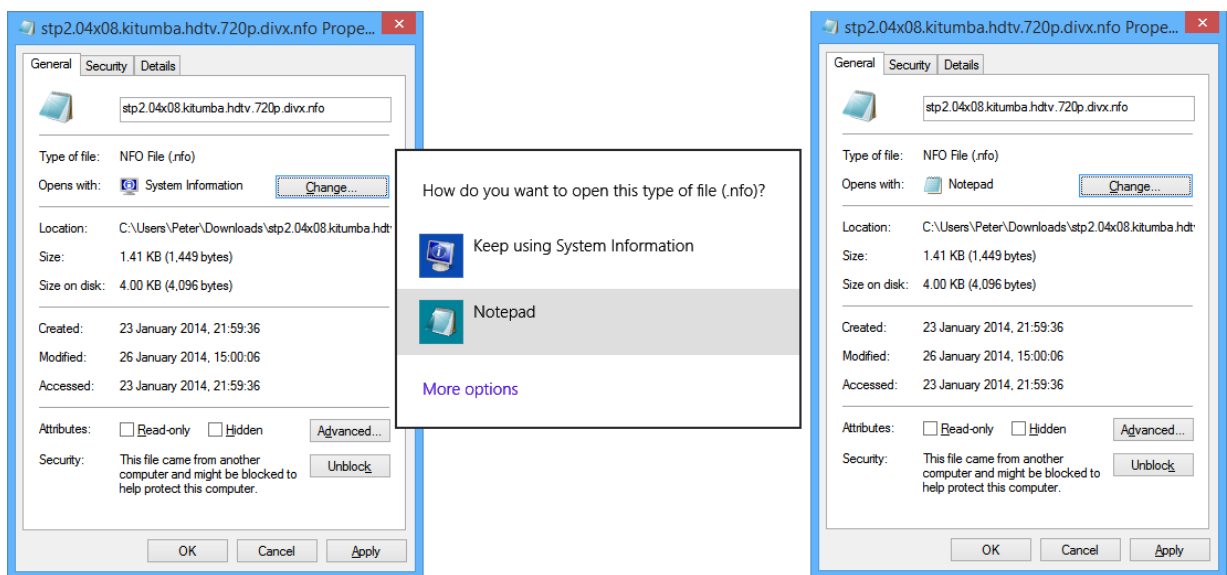
10. A new window will now appear showing the two files you extracted:



11. Click on the .mkv (or .avi if you downloaded the sdtv version) file and the video will start playing.

The \*.mkv file contains the actual video in DivX mkv format. If you are unsure what DivX is, it is explained earlier in this document. If you downloaded an SDTV file, use the .avi file instead.

The \*.nfo file is a text file containing information about the film. This file can be viewed with Notepad and can be safely deleted as required. Please note, by default, Windows associates \*.nfo files with “System Information”, which is not suitable to view these files. We recommend right clicking on the \*.nfo file and selecting “Properties”. If “Opens with: System Information” is displayed, click on “Change...”, select “Notepad” and then on OK. This only needs to be set once. You can then click on the \*.nfo file and read it correctly.



12. If you receive an error message stating that the video format can not be recognised, you will need to install the DivX driver (see the next page for more details) before you can view the film on your computer.



13. If you have a DVD player or TV that can play DivX files (the user manual will tell you this, often “DivX Certified” or “MPEG4” is written on the unit), you can also simply burn the \*.avi file onto a CD (or copy to an SD card or USB stick as available) and watch the film on your television. If you need subtitles, some DVD players will also recognize the .srt subtitle file as well. Subtitles for various languages can be downloaded separately from our website. More information is available earlier in this document. You can extract the appropriate .srt file, for the downloaded episode, and place it in the same directory as the \*.avi file for burning on CD. We recommend using Nero to burn the files on CD using ISO mode. Most recent DVD players now support DivX (MPEG4) playback, older ones may not. Note that most DVD players will not be able to play HD videos.

We hope this document has helped you to better understand how to play our videos. Please check the information section on [www.startrekphase2.de](http://www.startrekphase2.de) for updated versions of this document. If you subscribe to our RSS feed, we can inform you automatically when updates are made.

### ***Understanding the file names used:***

We use the following standard to name our files:

e.g. stnv.04x03-world.enough.and.time.hdtv.480p.divx.zip

stnv.	Series name: stnv = Star Trek New Voyages, stp2 = Star Trek Phase II
04x03-	Series and Episode number. 04 = Series 4 (after TOS), x03 = Third episode
world.enough.and.time	Name of episode in lower case = “World Enough and Time”
hdtv.	Standard (sdtv) or high resolution (hdtv) file.
480p.	Image size: 24p = 720x404 (SD), 480p = 854x480 (ED), 720p = 1280x720 (HD)
divx.	Denotes file encoded with the DivX encoder
zip	File has been stored in a zip archive. Please extract after downloading.
avi	Standard definition video file
nfo	Text file containing release information about the episode
srt	Subtitle file to be placed next to avi file of same name.
mkv	High definition video file. This usually includes subtitles if available.

### **Linking to our episodes:**

If you want to link to our episodes, always link to the episode page, not the actual .zip download file. We often change the file names and url locations as needed so linking to our zip files will often lead to dead download links.

When sending other people links to our website, please use the following links:

<a href="http://www.startrekphase2.de">http://www.startrekphase2.de</a>	(/en = English, /fr = French, /de = German, /es = Spanish)
<a href="http://www.startrekphase2.de/comewhatmay">http://www.startrekphase2.de/comewhatmay</a>	(or /cwm)
<a href="http://www.startrekphase2.de/inharmsway">http://www.startrekphase2.de/inharmsway</a>	(or /ihw)
<a href="http://www.startrekphase2.de/toserveallmydays">http://www.startrekphase2.de/toserveallmydays</a>	(or /tsamd)
<a href="http://www.startrekphase2.de/worldenoughandtime">http://www.startrekphase2.de/worldenoughandtime</a>	(or /weat)
<a href="http://www.startrekphase2.de/bloodandfire">http://www.startrekphase2.de/bloodandfire</a>	(or /baf)
<a href="http://www.startrekphase2.de/enemystarfleet">http://www.startrekphase2.de/enemystarfleet</a>	(or /esf)
<a href="http://www.startrekphase2.de/thechild">http://www.startrekphase2.de/thechild</a>	(or /tc)
<a href="http://www.startrekphase2.de/kitumba">http://www.startrekphase2.de/kitumba</a>	(or /kit)
<a href="http://www.startrekphase2.de/theholiestthing">http://www.startrekphase2.de/theholiestthing</a>	(or /tht)

These links will automatically send the visitor to the correct language website for them: English, French, German or Spanish.

## ***How you can help us make more Phase II episodes***

If you enjoy our episodes, we invite you to donate towards the costs of making them. As making such videos cost a lot of time and money, your donation can help us release new episodes more quickly. Every cent donated will be used for the New Voyages/Phase II project costs.

<http://www.startrekphase2.de/donate>

### **How can I help the production?**

New Voyages Phase II is embarking on an effort to further involve fans. In addition to our world-wide crew and cast base we are now accepting donations of any amount from appreciative and supportive fans from anywhere around the world. Donation gifts via PayPal.com are the easiest and fastest. Please check the box on PayPal that indicates the donation is a gift. Specific information regarding donations via PayPal.com, check or Postal Money Order will appear on the page with this message.

These donations will ONLY be utilized to support the production efforts of New Voyages Phase II.

These donations are NOT tax deductible within the USA or Europe because Retro Film Studios LLC is NOT, at this time, an IRS 501(c)(3) entity.

We strive to provide quality entertainment. We have nearly ten years of being in operation and to date have been funded entirely out-of-pocket by a few of the crew and cast members. Now, we are embarking on a broad-based network of caring, concerned fans to provide a solid donor base to allow continued quality entertainment at a faster pace. The assistance of every fan of our episodes is sought, even the smallest contributions. \$1, \$5, \$10, \$20, \$50 or higher donations will be invaluable to building a broad-base donor program.

The good news is that once we are able to concentrate more effort on producing and delivering episodes, YOU, the fans, will have more New Voyages Phase II entertainment to enjoy or to just view.

We fully intend to continue producing award winning and envelope-pushing Original Series style episodes.

Please simply click one (both, or all three) of the PayPal links found on our donate page to help out the production. <http://www.startrekphase2.de/donate>

Our eternal gratitude in advance...

The New Voyages Phase II Team

Peter Walker

Star Trek NV/P2, Germany.

<http://www.startrekphase2.de>

<http://www.startrekphase2.de/en> (English)

<http://www.startrekphase2.de/fr> (French)

<http://www.startrekphase2.de/de> (German)

<http://www.startrekphase2.de/es> (Spanish)

Star Trek Phase II, USA

<http://www.startrekphase2.com>